

## RhoA

**Catalog Number:** 26007

**Gene Symbol:** RHOA

**Description:** Anti-RhoA Mouse Monoclonal Antibody

**Background:** Small GTPases are a super-family of cellular signaling regulators. RhoA belongs to the Rho sub-family of GTPases. Rho proteins play critical roles in many actin cytoskeleton-dependent processes including platelet aggregation, cell motility, contraction, and cytokinesis. It regulates the formation of stress fibers and focal adhesions in fibroblasts and Ca<sup>2+</sup> sensitivity of smooth muscle contraction.

**Immunogen:** Recombinant full length protein of RhoA.

**Tested Applications:** ELISA, WB, IHC

**Recommended Dilutions:**

ELISA 1:1000-1:5000

WB 1:1000-1:2000

**Concentration:** 1 mg/ml

**Host:** Mouse

**Clonality:** Monoclonal

**Isotype:** IgG

**Purity:** Purified from ascites

**Format:** Liquid

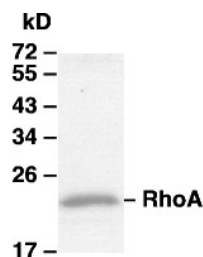
**Preservative:** No

**Constituents:** PBS (without Mg<sup>2+</sup> and Ca<sup>2+</sup>), pH7.4, 150 mM NaCl, 50% glycerol

**Species Reactivity:** RhoA antibody recognizes RhoA from vertebrates.

**Storage Conditions:** Store at -20°C. Avoid freeze / thaw cycles

### Western blot:



**WB:** anti-RhoA mAb

### Western blot analysis of RhoA proteins.

MEF whole-cell lysate was used for western blot with anti-RhoA mouse monoclonal antibody (Cat.# 26007).

FOR RESEARCH USE ONLY. NOT FOR DIAGNOSTIC APPLICATIONS